

TitraSip™ Systems

AquaMulti™ Analyzers
Multi-parameter Systems for Environmental Laboratories



Man-Tech AquaMulti™ Analyzers allow environmental laboratories to analyze multiple parameters from a single sample! All methods follow EPA approved methods and the TitraSip SA™ systems have been verified by the US EPA's Environmental Technology Verification (ETV) program, giving your laboratory the confidence to invest in Man-Tech instruments.

TitraSipSA™ System consists of:

PC-Titrate™ interface
TitraSip™ module
PC-Titrate™ software
48,000 step buret drive

Analyze for:

- pH
- alkalinity
- conductivity
- residual chlorine
- ammonia
- chloride
- fluoride
- hardness
- turbidity
- color
- dissolved oxygen
- phosphate

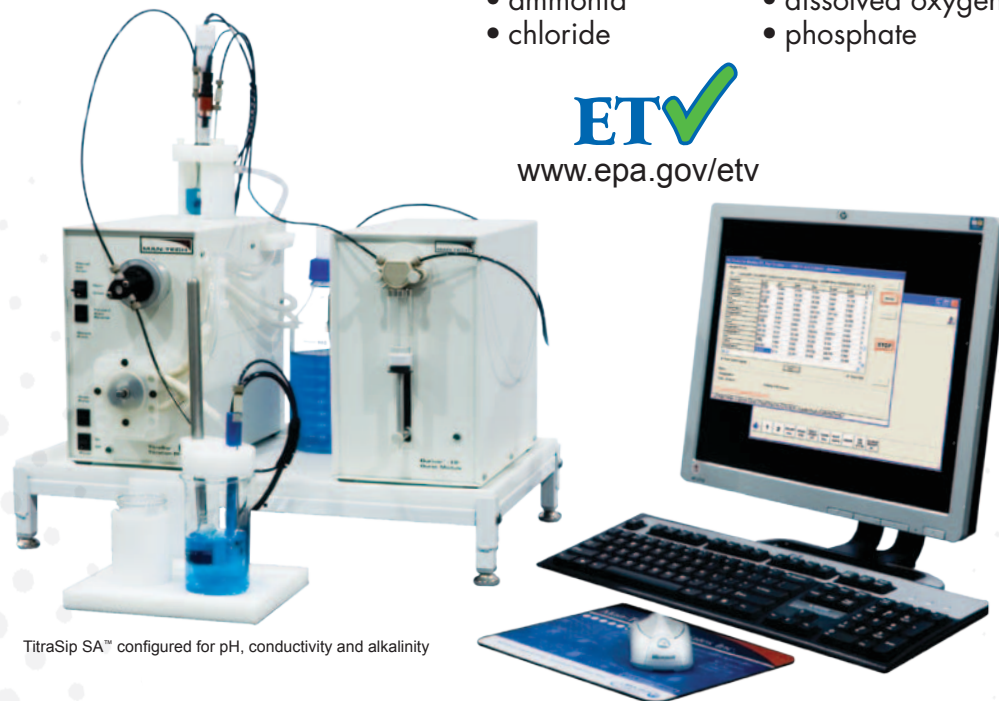
Choose the parameters your lab requires and a system is configured specifically for you... It's truly the perfect fit. As needs arise, additional parameters and automation may be added. (See page 2)

Features and Benefits:

- Automated pipetting
- Auto-dilution capabilities for high concentration samples
- Connect directly to flowing sample lines for automated, scheduled near-line analyses
- TitraSip™ module integrates pipettor, rinse pump, analysis vessel and drain system into a single system
- pH/conductivity/alkalinity analysis in 3 minutes or less per sample (total cycle time dependent on alkalinity concentration)
- IntelliRinse™ system ensures system and probes are clean before moving to the next sample
- Capability to add SmartCal™ for scheduled, operator-free calibrations and QC checks
- Follows EPA-approved methods



MANUFACTURED
IN CANADA



TitraSip SA™ configured for pH, conductivity and alkalinity



www.epa.gov/etv

TitraSip SA™ is the only titration equipment verified by the US EPA ETV program.

Ideal for municipal labs, effluent testing labs, environmental testing labs and more.



AQUAMulti™
A n a l y z e r s

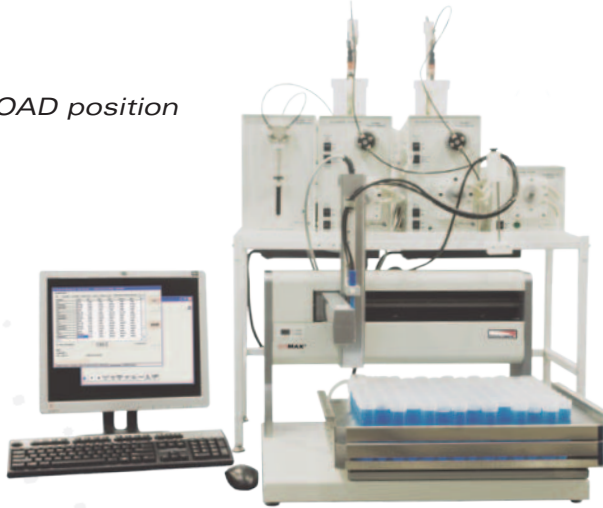
Disclaimer: The EPA Environmental Technology Verification Program (ETV) Name and/or Logo does not imply approval or certification of this product, nor does it make any explicit or implied warranties or guarantees as to product performance. Information on the performance characteristics of TitraSip SA™ can be found at www.epa.gov/etv, or call Man-Tech Associates Inc. at (800) 206-8116 to obtain a copy of the ETV verification report.

Load. Start. Done.

TitraSip™ with AutoMax™ Autosamplers Automated Multi-parameter Systems for Environmental Laboratories

TitraSip™ System

1. Place sample in LOAD position
2. Click START
3. You are DONE!

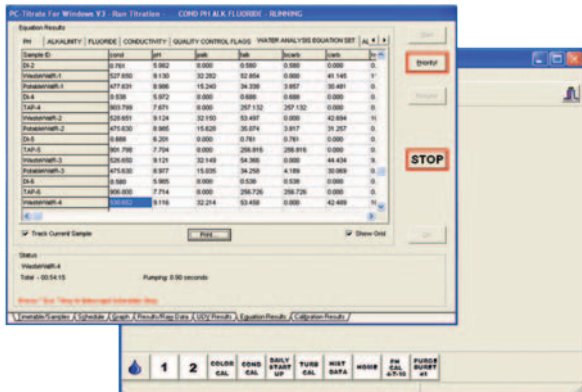


Shown Configured for
RapidDuo™
pH/conductivity/
alkalinity/fluoride in
3 minutes or less
(alkalinity < 500 ppm)

As easy as two clicks of the mouse to operate, TitraSip SA™ may be configured with or without an autosampler, depending on the number of samples you process. Connect directly to stream analysis for scheduled, operator-independent, multi-parameter analysis.

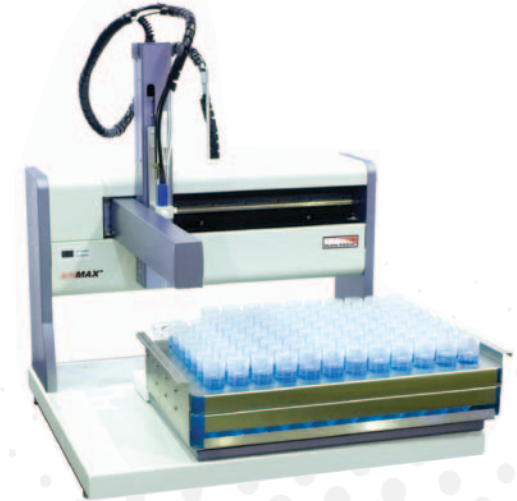
Software

The PC-Titrate software controls all facets of the TitraSip multi-parameter system including the AutoMax samplers, titrations, measurements, decision making (IF/ELSE/WHILE), calibrations, audit trail and import/export from/to LIMS



AUTO MAX™ Samplers

Man-Tech continues to exceed the requirements of environmental laboratories with durable and reliable autosamplers that stand the test of time. These systems allow for extended analysis runs during the day and overnight, delivering accurate and precise results each and every day.



AUTO MAX™ Rack Sizes

Autosampler	Racks (volume required dependent on parameters and system configuration)
AutoMax™73	73 x 50mL 40 x 120mL 30 x 125mL 18 x 300mL
AutoMax™122	122 x 50mL 62 x 120mL 47 x 125mL 23 x 300mL
AutoMax™197	197 x 50mL 97 x 120mL 77 x 125mL 44 x 300mL

Contact Us

MAN-TECH
2 Admiral Place
Guelph, Ontario CANADA
N1G 4N4

Phone: 1.800.396.8240
Fax: 1.519.763.9995
Email: info@mantech-inc.com

