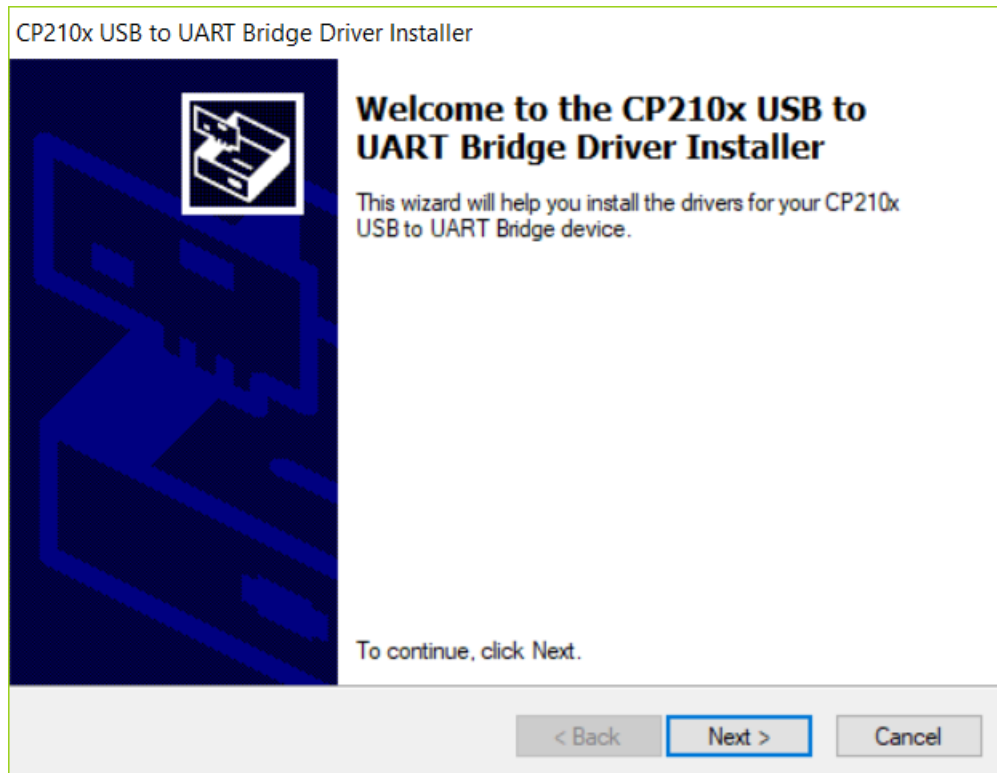


TECHNICAL BULLETIN

NUMBER 2019 - 013

Date: July 29, 2019
Author: Maggie Grierson
Subject: Setting up the YSI MultiLab IDS Meter for PC-BOD

1. Ensure that the appropriate driver has been installed on the computer. The driver is available on the CD-ROM included with the meter (Note, if a computer was also supplied by MANTECH, the driver will be pre-installed. If a USB key is provided, it will also contain the necessary driver):
 - a. Load the CD-ROM and navigate to: Computer\DVD RW Drive (F:)\LAB_YSI\Driver.
 - b. Double click on the appropriate installer for the computer operating system, i.e. 64-bit or 32-bit.
 - c. Follow the prompts in the installer by selecting “Next”, agreeing to the licensing, and then selecting “Finish”.



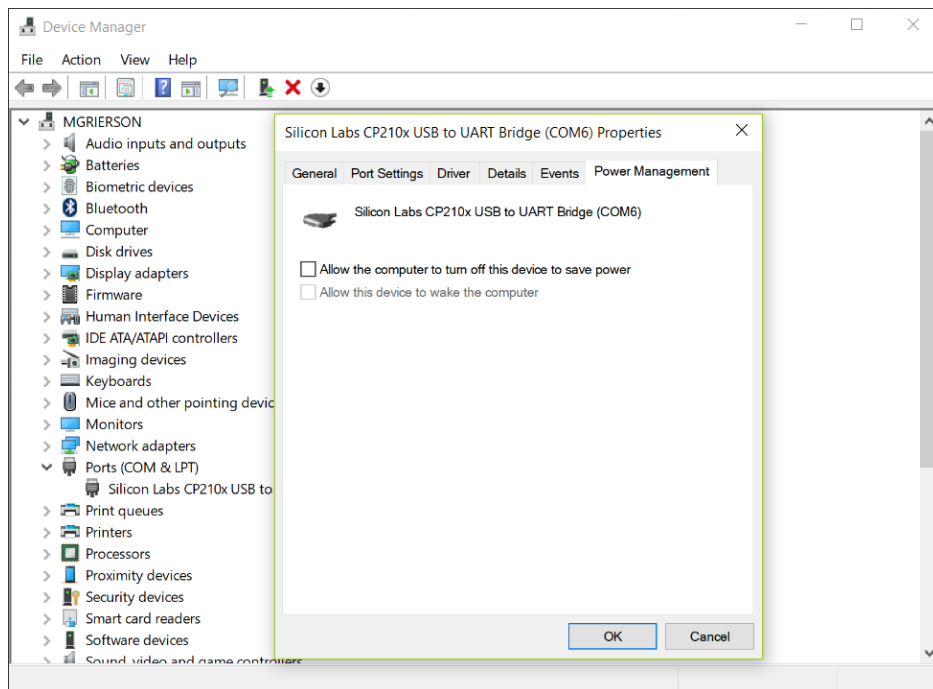
2. Connect the meter to the computer using the micro USB to USB cord provided with the meter. This cable is used to provide power and data transmission. Connect the power supply cable that is also included with the meter. Please note, if the power supply cable is not used, the meter will lose power each time the computer is

shut down. If the meter is not shut down prior to turning off the computer, the date and time will reset. All other parameters, like the calibration record, should remain saved in the meter, even if the meter is not shut down properly.

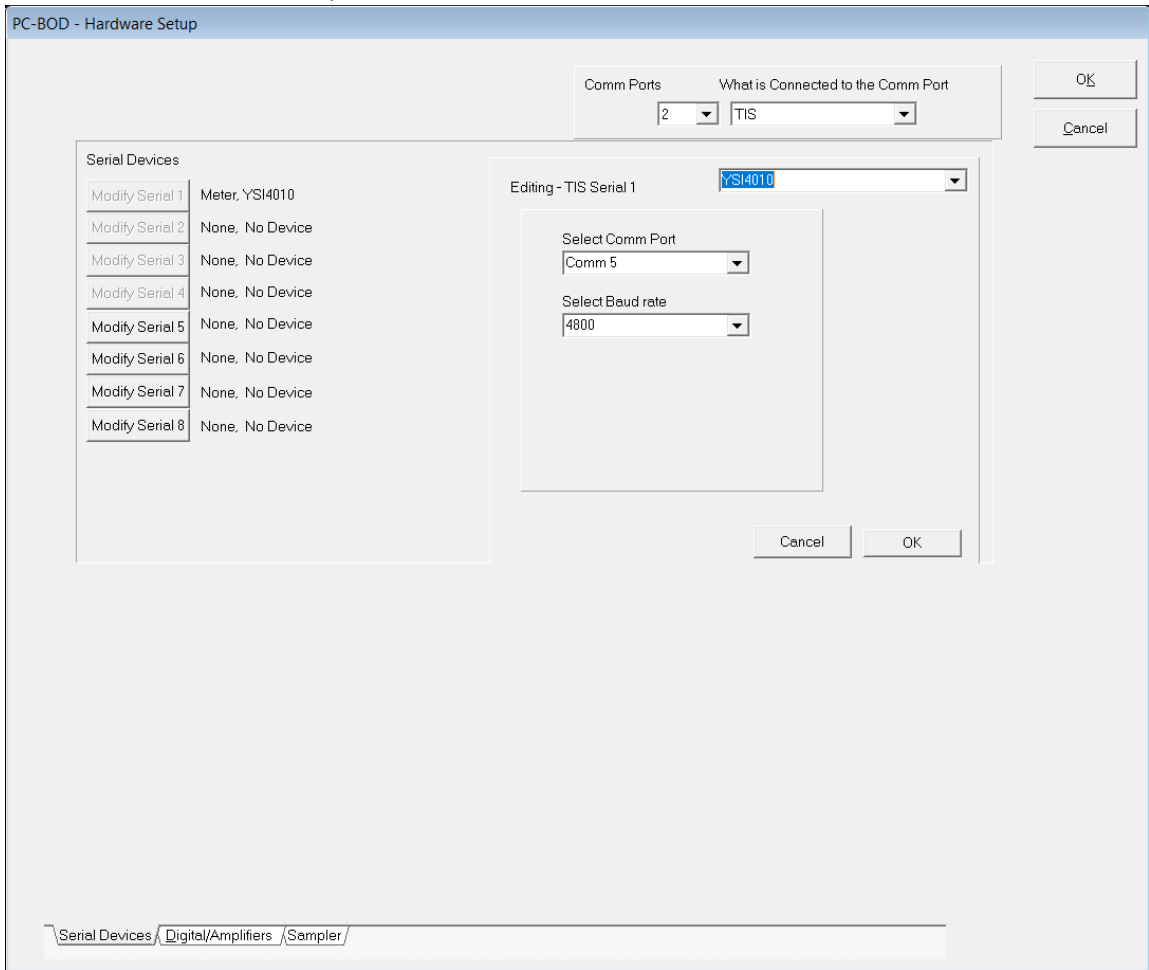
- a. Once connected to the computer/power; the meter screen will illuminate. If the probe is not connected to the meter, the display will say “Connect sensor”.
- b. If using the optical probe (PB-10208), the cable will have the adapter built in; simply connect the end of the cable, with the circular connector, into the sensor input on the back of the meter. The other square connector will connect to the stirrer adapter (PB-10213).
- c. If using the membrane probe (PB-10204), the cable will connect to an 8-pin mini DIN extension cable (PB-10188), which then connects to the adapter (PB-10214). On the adapter, connect the circular connector into the sensor input on the back of the meter. The other square connector will connect to the stirrer adapter (PB-10213).

3. Go to the Device Manger on the computer.

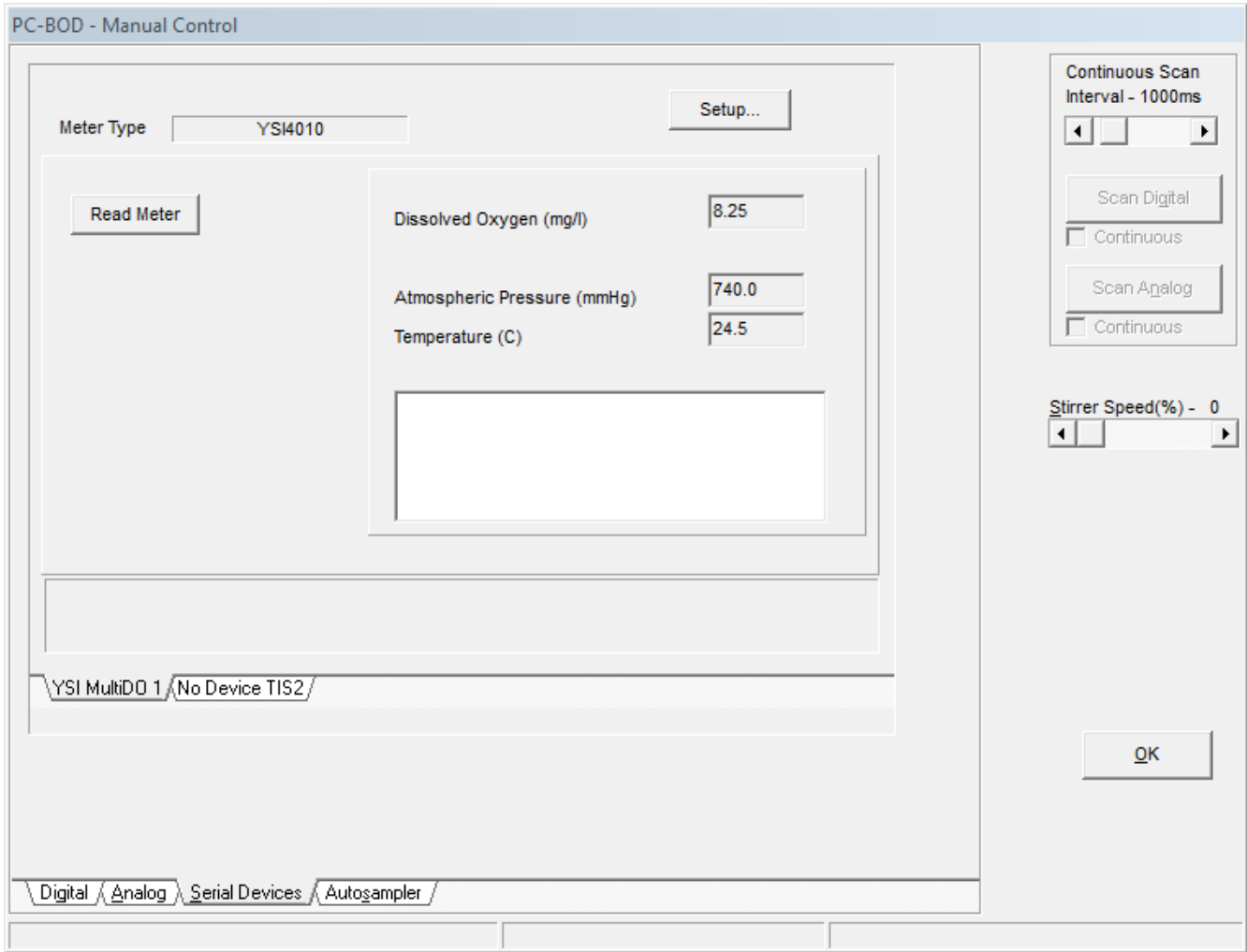
- a. Select the drop-down arrow beside Ports (COM & LPT).
- b. By default, the COM Port is setup on COM6. Right-click on CP10x USB to UART Bridge and select “Properties”. Select “Port Settings” then “Advanced”.
- c. Ensure the “Use FIFO buffers..” is NOT checked.
- d. Click on the drop-down beside “COM Port Number” and select “COM5”. Click “OK”.
- d. Within the Power Management tab, ensure that the “Allow computer to turn off this device to save power.” is NOT checked.
- e. Click “OK” to save the changes and exit.



3. Launch the PC-BOD software.
 - a. Navigate to Interface\Hardware Setup.
 - b. Select “Modify Serial 1”.
 - c. From the drop-down menu, select “YSI4010”.
 - d. Underneath “Select Comm Port”, select “Comm5”.
 - e. Underneath “Select Baud rate”, select “4800”.
 - f. Click “OK” below the drop-down options, then, click “OK” at the top of the window to update the Hardware Setup.



4. Confirm communication with the meter in “Manual Control”.
 - a. Go to “BOD\Manual Control”. Please note, the interface must be connected to access Manual Control.
 - b. Within the “Serial Devices” tab, select “YSI Multi DO1”.
 - c. Select “Read Meter”. Ensure that the value recorded matches the display on the DO meter.



For further details, please contact the MANTECH technical team at support@mantech-inc.com.