

MANTECH AutoMax 122 Autosampler Setup Instructions

1. Remove the autosampler from the box and place on the laboratory bench.
2. Locate the z-arm, communication cable, and cable clip.



3. Loosen the z-arm screw on the autosampler to allow space to insert the z-arm.



4. Slide the z-arm into the autosampler bracket and tighten the screw once the z-arm height is at 200mm. (If a different z-height is specified on the z-arm, secure the z-arm at the height as marked.)



5. Plug the z-arm cable into the back of autosampler.



6. Attach the cable clip to the cable rod.



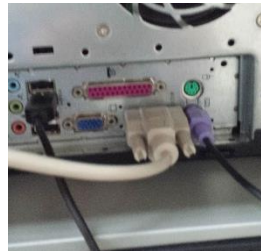
7. Secure the black rubber section of the Z arm cable into the cable clip as shown below.



8. Remove the screw from the bottom of the rod and push the screw up through the hole behind the autosampler. Screw the rod onto the screw.



9. Plug one end of the autosampler cable into the back of sampler and the other end into Port 1 of the computer or serial adapter.



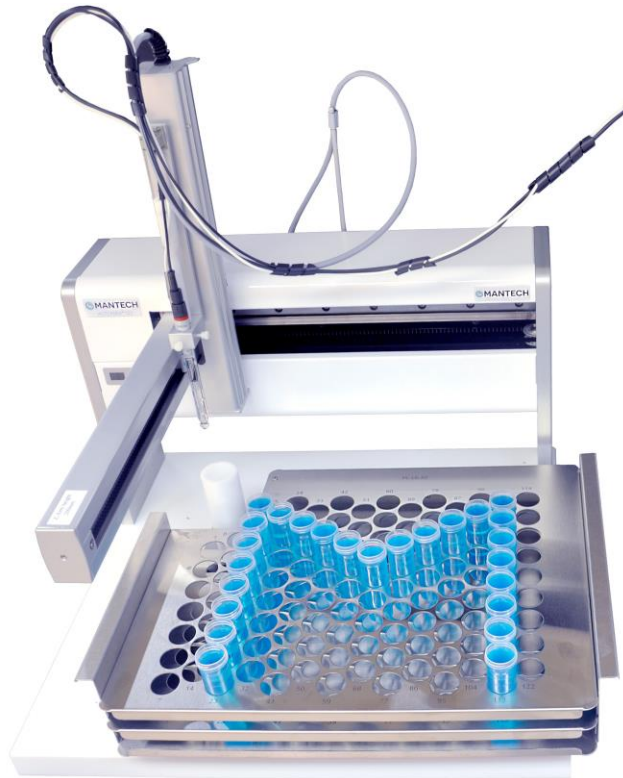
10. Plug the autosampler into a power supply.





MANTECH-INC.COM

11. The AutoMax 122 setup is now complete.



Rack, rinse station, and probe holder are not included with the AutoMax122; it must be ordered separately.