

# TECHNICAL BULLETIN

## NUMBER 2021 - 010

**Date:** October 4, 2021  
**Author:** James Howley  
**Subject:** Retrieving calibration records from the YSI 4010 meter

The YSI 4010 meter will store the records for the last 10 calibrations performed on the meter. In order to retrieve these records, it is necessary to have both Excel and the YSI MultiLab Importer software installed on the computer attached to the meter.

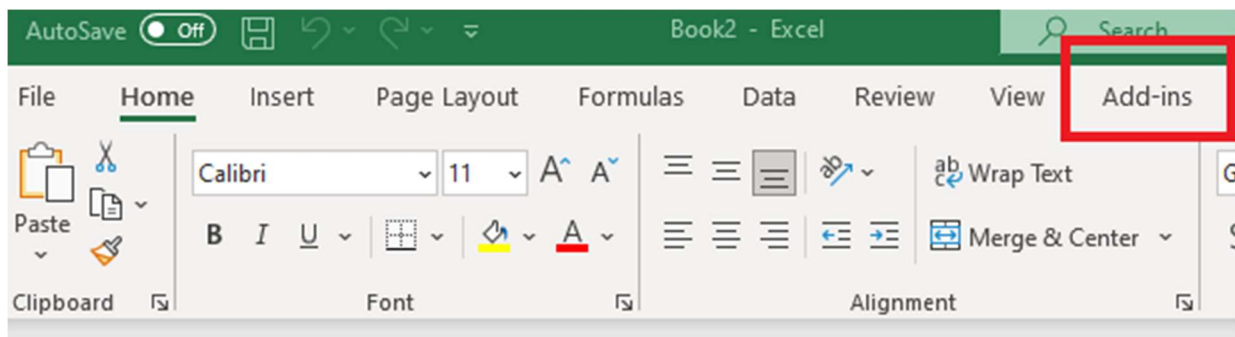
If the YSI MultiLab software is not installed, it can be downloaded from one of the following links.

<https://www.ysi.com/customer-support/software-firmware-downloads>

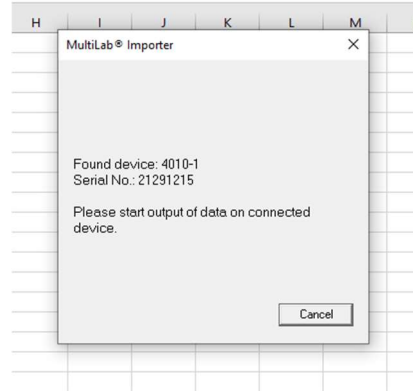
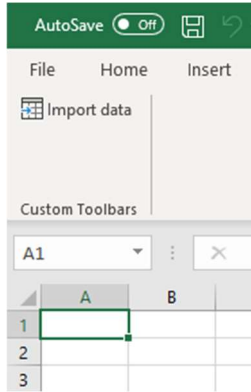
[https://www.dropbox.com/s/9n0fxhwmc2q787p/MultiLabImporter\\_Setup64\\_1.21.zip?dl=0](https://www.dropbox.com/s/9n0fxhwmc2q787p/MultiLabImporter_Setup64_1.21.zip?dl=0)

### Retrieving Calibration Records

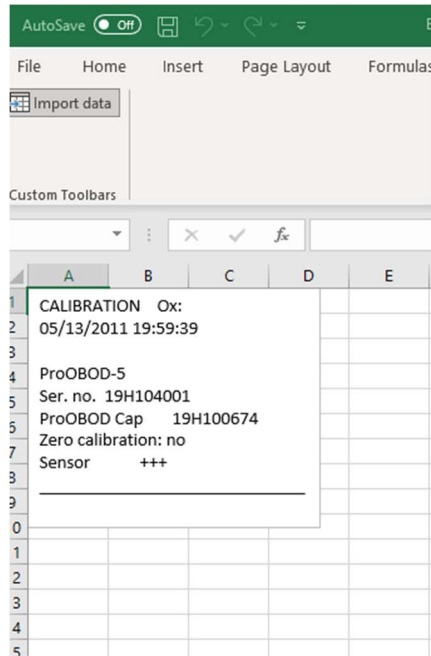
1. Once the YSI MultiLab Importer software has been installed on the computer, open a new workbook in Excel and click on **Add-Ins** in the upper toolbar.



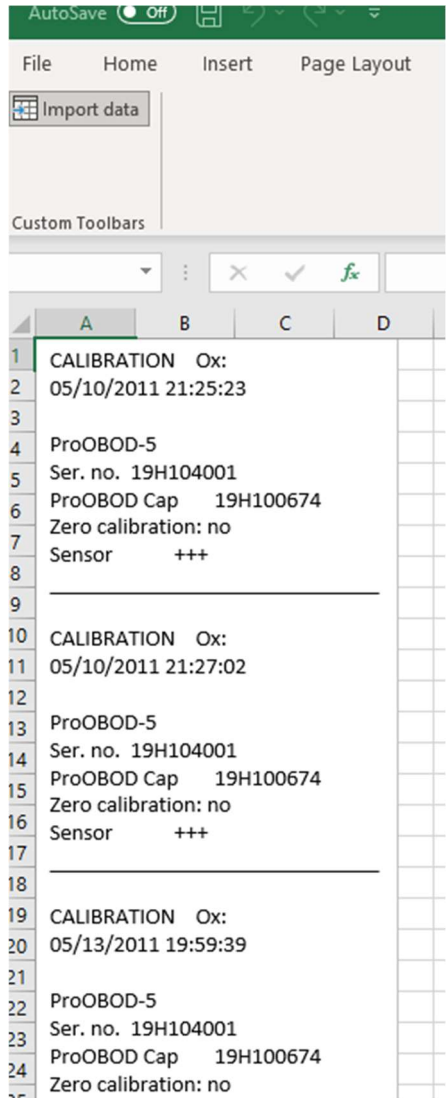
- Click on **Import Data** in the custom toolbar that pops up. You should see a dialog box showing that the meter is connected. Leave this box on the screen.



- To retrieve the most recent calibration record, hit **Enter** on the meter. **Calibration** will be highlighted. Hit **Enter** again. **Calibration record** will be highlighted. Hit **Enter**. Then hit **F2** and the record should show up in Excel. Then hit **F1** 3 times to get back to the measurement screen.



- To retrieve more than just the most recent calibration record, hit **Enter** on the meter. **Calibration** will be highlighted. Hit **Enter** again. Use the **down arrow key** to highlight **Calibration data storage**. Hit the **down arrow key** again to highlight **Output to RS232/USB** and hit **Enter**. The records will show up in Excel with the oldest on top. Hit F1 3 times to get back to the measurement screen.



For further details, please contact the MANTECH technical team at [support@mantech-inc.com](mailto:support@mantech-inc.com).