



# MANTECH

OPTIMIZE YOUR RESULTS. PROTECT OUR ENVIRONMENT.

## MT SERIES

### ENVIRONMENTAL ANALYZERS

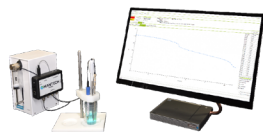
FAST ANALYSIS & QUICK ROI FOR WATER AND SOIL TESTING WITH POSITIVE ECONOMIC & SUSTAINABLE IMPACTS

**MARKET LEADER**  
LOWEST COST  
PER SAMPLE



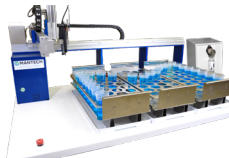
#### MT3

pH / Ion Meter  
that does more!



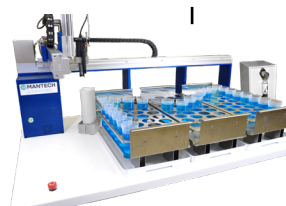
#### MT5

Autotitrator  
that does more!



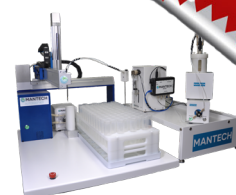
#### MT10

Static Rinse



#### MT30

Dynamic Rinse



#### MT100

Dynamic Rinse + Automated Pipetting

MODELS WITH AUTOSAMPLERS

MT analyzers can measure pH, EC, alkalinity, turbidity, COD, "optimized" TOC, fluoride as well as additional [water](#) and [soil](#) applications.

## BOD SERIES

### AUTOMATED BIOCHEMICAL OXYGEN DEMAND ANALYZER

5, 6 & 7-DAY BOD & CBOD

AUTOMATED SAMPLE PREP

CONFORMS TO SM, EPA, & ISO

SOFTWARE ENSURE VALID, QUALITY RESULTS



#### + OPTIONAL 10-MINUTE BOD ESTIMATOR PACKAGE

- ✓ BOD & estimator operate simultaneously
- ✓ Reduces sample dilutions
- ✓ Frees up technician time
- ✓ Timely results for operators & engineers to make informed decisions



## PeCOD® ANALYZER

### COD, ESTIMATED BOD AND "OPTIMIZED" TOC ANALYZER

RESULTS IN MINUTES!

- 10-MINUTES FOR COD & ESTIMATED BOD
- 5-MINUTES FOR "OPTIMIZED" TOC

SAFE & GREEN CHEMISTRY – NO HAZARDOUS CHEMICALS

BENCHTOP, PORTABLE, AUTOMATED AND ONLINE OPTIONS AVAILABLE



# Introducing MANTECH PRO™

MANTECH PRO™ IS A SMART LAB AUTOMATION SOFTWARE SPECIFICALLY DESIGNED FOR OUR MT SERIES & PECOD®.

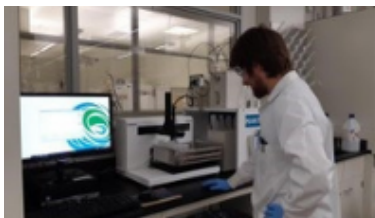
## THE EASY-TO-USE SOFTWARE FEATURES:

- LIVE VIEW OF TITRATION PLOTS, METER AND PROBE READINGS
- CALIBRATION CURVE UPDATES IN REAL TIME AS STANDARDS ARE MEASURED
- OPTIMIZED FOR WINDOWS 10
- INTUITIVE USER INTERFACE
- EMAIL ALERTS FOR RUN COMPLETION AND EVENTS
- FULL IMPORT/EXPORT LIMS CAPABILITY
- [AND MORE!](#)



*At MANTECH, we make water quality analysis faster, simpler,  
greener and more informative.*

From accredited laboratories to water treatment facilities, manufacturing plants and everything in between, MANTECH's line of innovative analyzers have been used by our diverse customer-base to make impactful decisions that deliver significant positive economic and sustainable impacts for our customers in their businesses and communities. With over 3,000 analyzers globally, in 50+ countries, providing more than 670,000 results per day, MANTECH systems are known to be robust and trusted to deliver quality results.



OPTIMIZE YOUR RESULTS. **PROTECT OUR ENVIRONMENT.**

## [WWW.MANTECH-INC.COM](http://WWW.MANTECH-INC.COM)

CONTACT US AT:

[INFO@MANTECH-INC.COM](mailto:INFO@MANTECH-INC.COM)

+1 (866) 763-2122

[WWW.MANTECH-INC.COM](http://WWW.MANTECH-INC.COM)

 [@MANTECH-INC](https://twitter.com/MANTECH-INC)

 [LINKEDIN.COM/COMPANY/MANTECH-INC](https://LINKEDIN.COM/COMPANY/MANTECH-INC)

5473 HIGHWAY 6 NORTH  
GUELPH, ON CANADA  
N1H 6J2