

## Setup Instructions

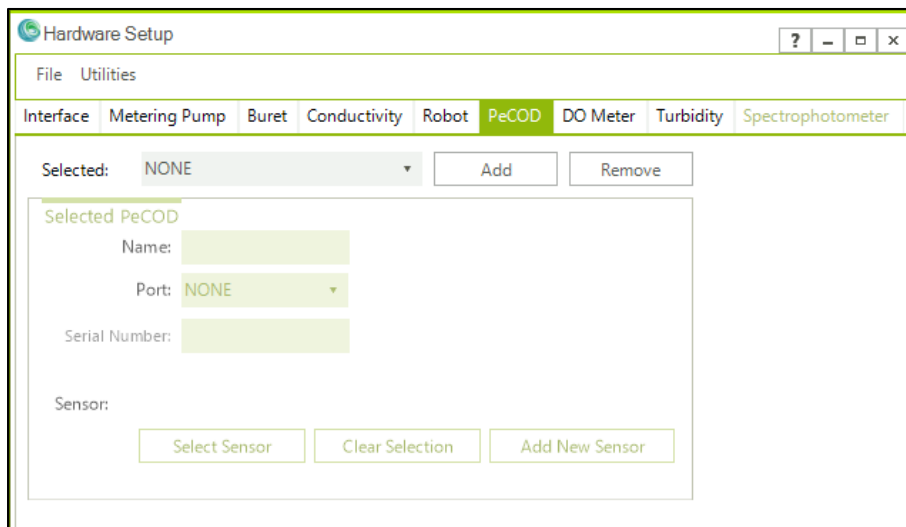
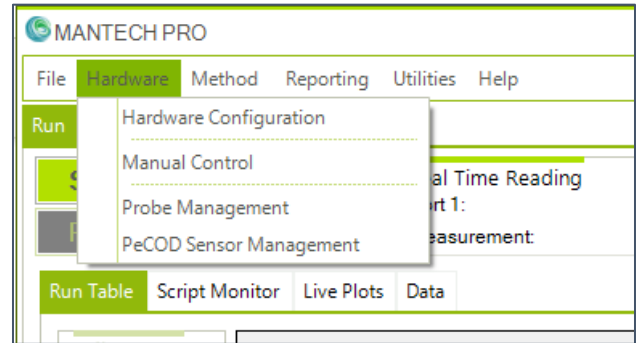
### Setting up PeCOD® L50 COD Analyzer on MANTECH PRO

Once the hardware for the PeCOD® COD Analyzer has been assembled, it is ready to be connected to MANTECH PRO software.

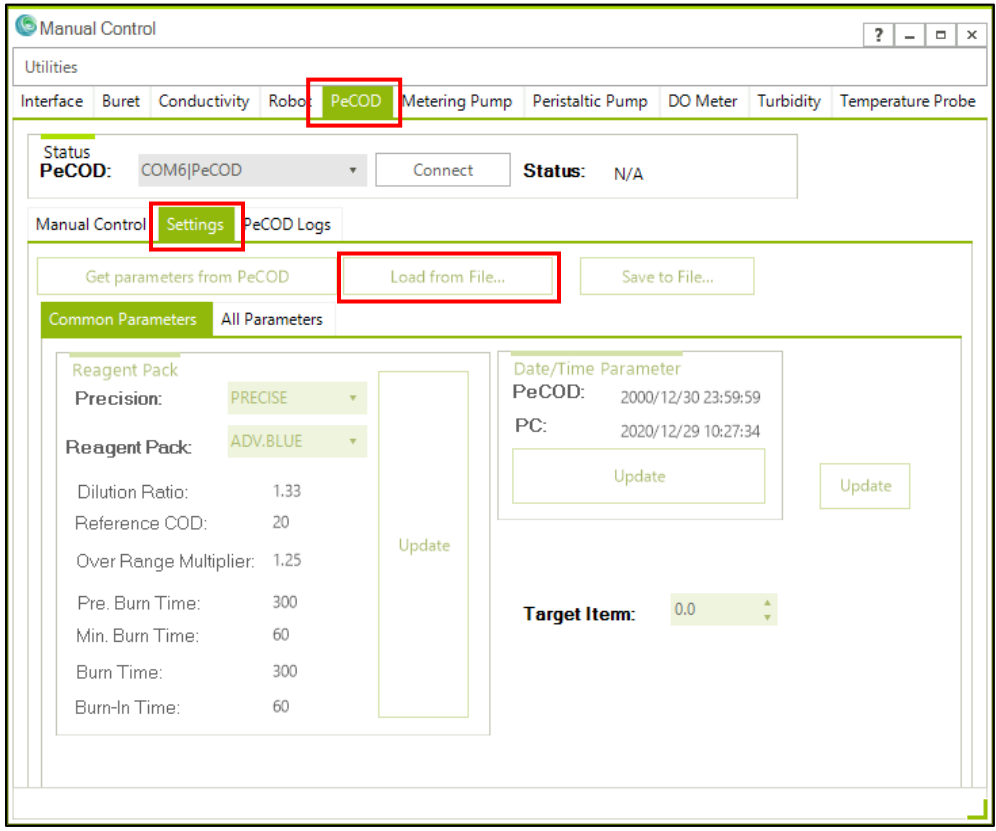
A database file has been provided with your order, which contains all the scripts necessary to run analyses and calibrations. To update MANTECH PRO with the new database, follow the instructions in [this video tutorial](#).

Once the database is ready, launch MANTECH PRO. Connect the PeCOD to the software in 'Hardware' > 'Hardware Configuration' under the 'PeCOD' tab.

Add a new PeCOD by selecting the appropriate COM port (COM 6) and entering the PeCOD's serial number (which can be found on the back of the module). The sensor number may also be entered or updated here, but is not required.



Under the 'PeCOD' tab in 'Hardware' > 'Manual Control', you can load the PeCOD parameters that have been provided with your order. Go to 'Settings' > 'Load from File...' and load the '.peconfig' parameter file that was provided to you.



The PeCOD is now ready for use. Instructional videos on how to use MANTech PRO to run analyses and calibrations can be found [here](#).

For further questions/inquiries, please contact [support@mantech-inc.com](mailto:support@mantech-inc.com)