

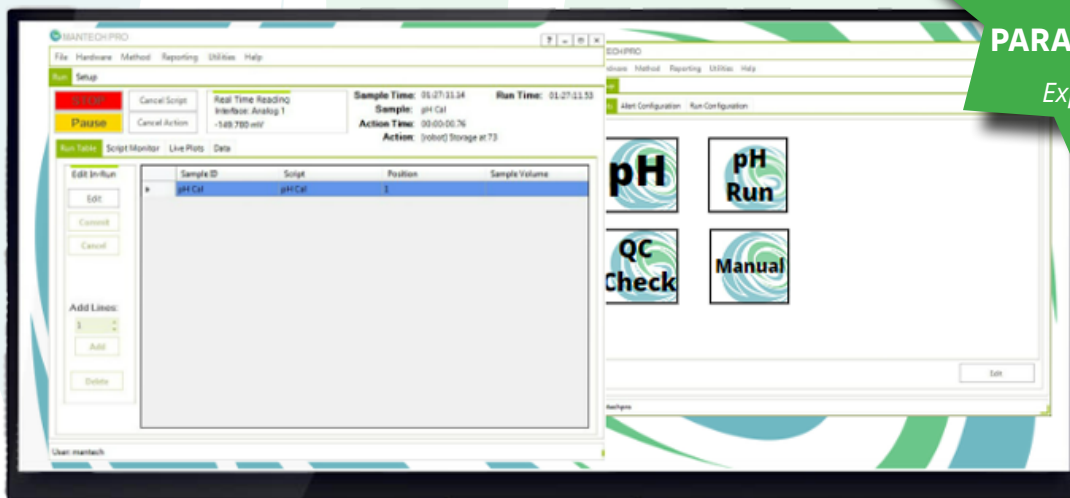


MANTECH

OPTIMIZE YOUR RESULTS. PROTECT OUR ENVIRONMENT.

SAVE 25%
+ 35% OFF
PARAMETER ADD-ONS

Expires Dec. 31, 2026



pH METER & ADJUSTMENT SOLUTIONS

MT3

A pH Meter That Does More

The MT3 will automatically measure the pH, or other ions such as fluoride, using stability criteria defined by you. Optional software-controlled variable speed stirrer paddle for automated mixing. All data is then recorded in the software and can be automatically exported to your LIMS.

The MT3 pH meter includes:

1. pH probe (optional paddle stirrer & USB temperature probe)
2. MiniHub™ Interface
3. Analysis stand
4. Accommodates any vessel size

Note: [Any parameter](#) offered by MANTECH can be added to this single analysis station controlled by the same software.



For a Limited Time, Save 25% Off
An MT3 or MT4 System, plus 35% off parameter add-ons
Offer ends December 31, 2026

MT4

Automated pH Measurement & Adjustment

Similar to the MT3, measures and records pH readings in MANTECH Pro™ however, the MT4 goes one step further. If the sample is outside your desired pH range, one of the two peristaltic pumps will automate the delivery of either acid or base until the desired pH is achieved.

The MT4 pH meter with adjustment includes:

1. pH probe, paddle stirrer, temperature probe and two dispense tips
2. MiniHub™ Interface
3. Analysis stand
4. Accommodates any vessel size
5. IntelliPeri™ pumps or burets deliver either acid or base depending on precision required (option for 1 or 2 depending on the procedure needed to adjust within desired range)

Note: MT4 is ideal for biochemical oxygen demand (BOD) sample preparation as well as PeCOD sample preparation.



MANTECH PRO

Application Driven Analyzers

Designed by MANTECH's in-house software development team, MANTECH Pro™ takes the guesswork out of your analysis.

All parameters MANTECH offers are built into the software only requiring additional hardware to add more analyses to a single station set up.

MANTECH Pro is included with every MT Series model.



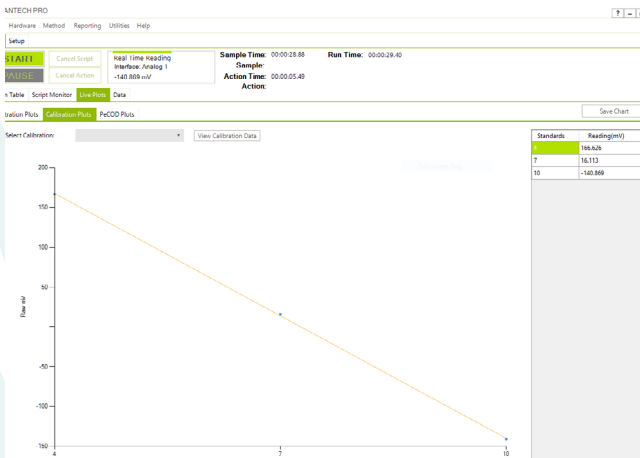
No LCD Screens

No Handwritten Benchsheets

No Manual Calculations

Quick and Convenient Calibrations

No need to remember when probe was last calibrated. MANTECH Pro™ saves all 3-point calibrations and notifies analysts when they need to re-calibrate (*which only takes 30 seconds!*).



Store & Search 1000s of Data

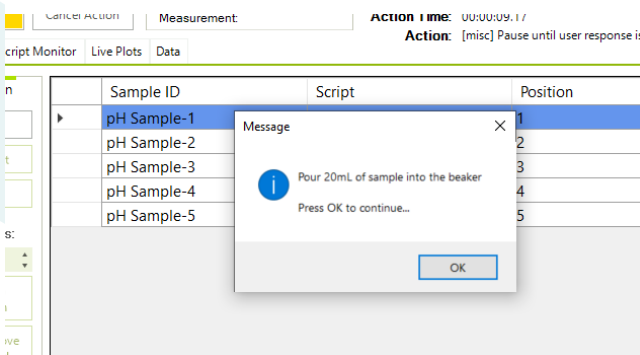
Multitasking capabilities allow analysts to search all historical data saved in MANTECH Pro™ even during a run. MANTECH Pro is agnostic to any LIMS for full importing/exporting.

Search Options: Filter: in Any, Date Range: 12/03/2020 to 12/04/2020

Sample	Template	Date/Time	User	Run ID	Run Configuration Template	PH	Conductivity
pH Calibration	pH Cal	12/04/2020 13:32:03	mantech	35			
pH Cal	pH Cal test	12/04/2020 13:37:19	mantech	36			
pH Cal	pH Cal test	12/04/2020 13:40:41	mantech	37			
pH Cal	pH Cal	12/04/2020 13:49:18	mantech	38			
pH Analysis - 1	pH Analysis	12/04/2020 15:34:58	mantech	39		13.2618	

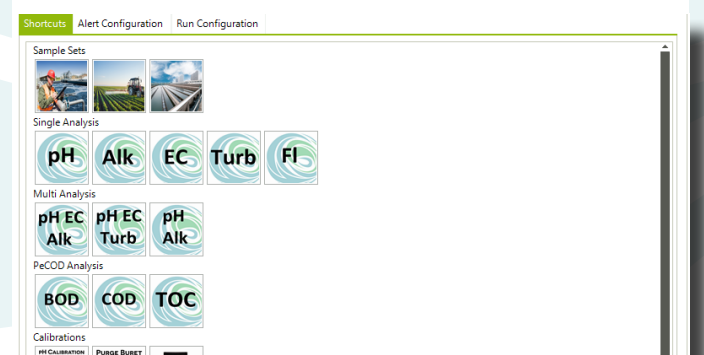
Step-By-Step Prompts

Standardize your analysis procedures from analyst to analyst with built-in user defined step-by-step prompts.



Shortcut Buttons

Customize home screen shortcut buttons for routine analyses, maintenance or even manuals to streamline analyses.



SPECIFICATIONS

pH APPLICATION

Parameter	Application	Methodology	Conforms to:	Range of Measurement	RSD Specifications
pH	Water, Soil	pH Electrode Measurement	EPA 150.1, 150.2; SM 4500-H+ B; ASTM D 1293; ISO 10523	1 - 14	+/-0.05

SOFTWARE & HARDWARE

	Description	Features	IoT Connection	Dimensions (l x w x d)
MiniHub™ Interface	The compact, software-controlled interface connects all system components including electrodes, stirrers and more for all parameters.	x6 digital outputs and x6 digital inputs: <ul style="list-style-type: none"> x4 Galvanically separated electrode ports with BNC connectors x3 24V software-controlled and variable speed stirrers x3 liquid level sensors (specific to BOD5 analysis) 	Ethernet/IP connection	6" x 4" x 2" 15 x 10 x 5cm
Probe Stand & Holder	Accommodates several probes, stirrers and dispense tips (depending on applications) to easily move between rinse cups and sample tubes, cups or beaker as well as houses the MiniHub™ interface.	<ul style="list-style-type: none"> Screw to raise or lower for moving probes. Accommodates any tube, cup or breaker size. 	N/A	10.5" x 7" x 6.5" 27 x 18 x 16.5cm
pH Electrode	TitraPRO4 pH electrode and communication cable featuring fast response time with superior accuracy and repeatability.	<ul style="list-style-type: none"> 3 point calibration Calibration Time: 30 seconds pH Value: ≤10 seconds pH Range: 0 - 14 pH 	BNC/S7 connection	12mm (dia) x 120mm (l)
MANTECH Pro™ Software	Requires computer with Windows 10 or 11 Pro OS. with built in capabilities for all parameters offered by MANTECH in a single computer and software platform. Simplifies your analysis by consolidating all thousands of sample data in one place, gives real-time results with live titration plots and logs maintenance/service performed on hardware with reminders for daily, weekly, monthly and annual tasks.	<ul style="list-style-type: none"> Designed for WIN 10/11 Pro OS Full LIMS import/export functionality Email alerts Multi-language Custom shortcut Buttons User defined step-by-step prompts Built-in context sensitive help section with GIFs and instructions 	USB connection	N/A
Peristaltic Pump	MANTECH's IntelliPeri™ (peristaltic pump) is completely controlled by MANTECH Pro to calibrate as well as adjust the flow speed and direction for any application.	<ul style="list-style-type: none"> Flowrate: 12.5 - 860mL/min Software-controlled RPM Software-controlled direction Autocalibration in software 	USB connection	7" x 6" x 6" 18 x 15 x 15cm

WHY MANTECH

TRUSTED WORLDWIDE



With 3,500+ analyzers in the market, MANTECH systems are trusted to produce more than 700,000 results every day that protect public health and the environment.

END-TO-END MANUFACTURER



MANTECH develops and manufactures all hardware and software as a single source provider.

MODULAR DESIGN



The modular design allows for MANTECH systems to be highly configurable and plug-and-play for system upgrades and troubleshooting.

SUPPORT



MANTECH offers several options:

- Context sensitive GIFs and instructions built into software
- On-Demand virtual support
- In-person visits with MANTECH Technical Representatives or distributors

IOT CONNECTIVITY



All MANTECH system components feature IoT connectivity via USB or ethernet/IP connection for bi-directional communication with the software.

[Visit mantech-inc.com](https://www.mantech-inc.com)

[Request a Quote](#)



5473 HIGHWAY 6 NORTH
GUELPH, ONTARIO, CANADA
N1H 6J2

WWW.MANTECH-INC.COM
INFO@MANTECH-INC.COM
+1 (519) 763-4245
+1 (866) 763-2122

@mantech_inc

[linkedin.com/company/mantech-inc](https://www.linkedin.com/company/mantech-inc)

© 2026 MANTECH. All rights reserved.
PeCOD® is a registered trademark of
MANTECH.